

# HTA APPROACH AT THE CHUQ FOR EVIDENCE-BASED DECISION MAKING

Simard C., Labadie R., Cantin V., Rhainds M.

Centre Hospitalier Universitaire de Québec, Unité d'Évaluation des Technologies et des Modes d'Intervention en Santé, Québec, Canada

**UETMIS**  
Unité d'évaluation des technologies  
et des modes d'intervention en santé



## HTA APPROACH AT THE CHUQ FOR EVIDENCE BASED DECISION-MAKING

### OBJECTIVE

To present the approach used at the CHUQ to facilitate decision-making for managers, clinicians and professionals about the introduction of a new technology or a new clinical practice.

### METHODS

This approach involves stakeholders (managers, clinicians or professionals) from the beginning and throughout the assessment process. CHUQ managers, clinicians and professionals are invited to assess their needs for HTA and submit their questions using a standardised form. Assessment questions are transmitted to the HTA Executive Committee which selects the questions according to their relevance and anticipated benefits as well as the possibility of significant impacts for individuals' health or for the organization.

#### Assessment process:

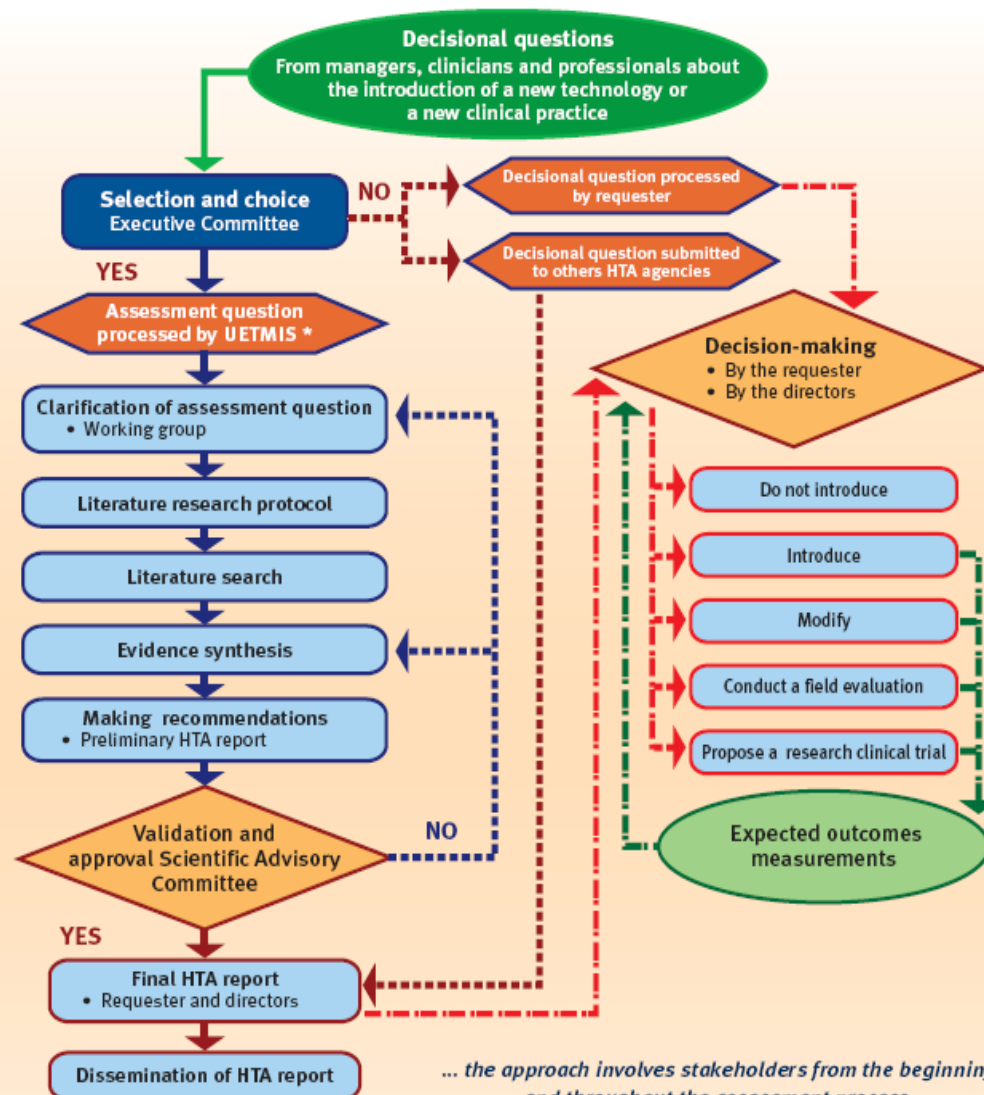
- 1) Stakeholders receive the support of the UETMIS team which collects available evidence from a diversity of sources (scientific publications, experts opinions, etc.) using recognized literature search methods.
- 2) Evidence synthesis allows to assess the effectiveness, safety and costs of a technology or clinical practice as well as its impacts for the patient and for the organization.

### RESULTS

Analysis of the relevant information results in the formulation of recommendations that are specifically applicable to the CHUQ context or in a presentation of the key findings to consider in the decision-making process. Members of the UETMIS Scientific Advisory Committee evaluate the rigour of the assessment process and the quality of the HTA reports before recommendations are submitted to the requester and the CHUQ Management Committee.

### CONCLUSIONS

The structured HTA approach developed at the CHUQ helps support managers, clinicians and professionals in evidence based decision-making.



... the approach involves stakeholders from the beginning and throughout the assessment process.